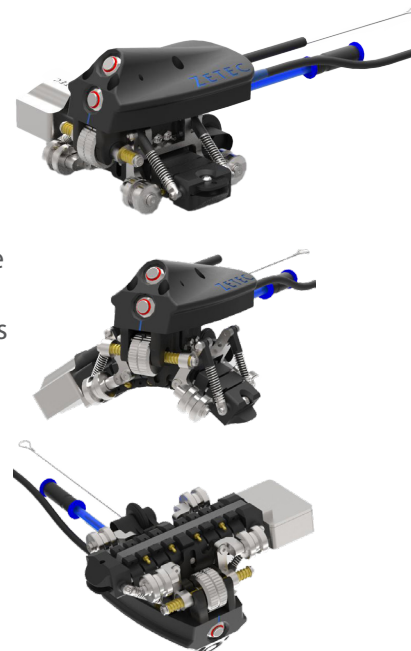


## ElbowFlex™ Scanner

The ideal scanner for quick, manual ultrasound examinations of pipe elbows

The ElbowFlex scanner is the perfect tool for quick, manual ultrasonic inspections of pipe elbows. It is ideal for detecting and measuring different types of flaws including corrosion pitting, mid-wall lamination and can measure remaining wall thickness.

The highly versatile ElbowFlex scanner can scan on both the straight and elbow parts of a pipe. It is designed so that one flexible phased array probe is able to inspect pipes and elbows from 4" NPS (4.5") to flat. Featuring simple button operation, magnetic wheels and an aqualene membrane, the ElbowFlex scanner is easy to use and saves time while providing 100% coverage confidence.



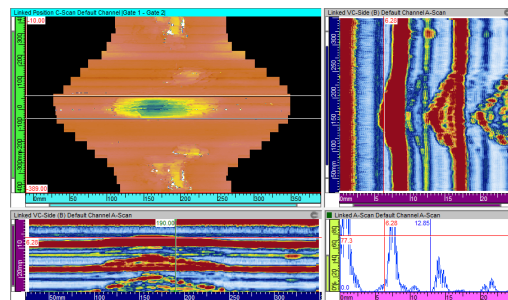
### Features & Benefits

#### ► Easy to Use and Deploy

- **One flexible PA probe for the entire pipe range:** One probe can adapt to the scanned specimen dimension and stay concentric throughout the inspection
- **C-Scan imaging for easy analysis:** Encoded data can be easily interpreted using UltraVision Touch software
- **Magnetic wheels:** Help the operator keep the scanner in place while following the scan lines for complete coverage

#### ► Highly Versatile

- **Aqualene membrane:** An aqualene membrane is used for coupling in lieu of the traditional water chamber reducing the water needs to only a thin film of water on the specimen surface. The scanner can also work with standard coupling gel or a mixture of water and gel as the couplant
- When combined with any TOPAZ family instrument, data can be saved at a high resolution



## Specifications

Parameter	Value
Dimensions (H x L x W)	Maximum 63.5mm x 102mm x 89mm (2.5" x 4" x 3.5")
Weight	1kg (2.5lbs)
Inspection Surface Curvature	4" NPS (4.5") to flat
Probe	Type: Flexible
	64 elements
	7MHz
	Pitch: 1mm
	Elevation: 7mm
	ZPAC or IPEX connector
Minimum Clearance	Required free access distance over inspection surface
Encoder	Type: Quadrature Resolution: 13.01
Umbilical Length	5m (10')
Inspection Surface	Any steel surface
<b>Environmental Specification</b>	
Operating Environment	-20°C (-4°F) to 45°C (110°F)
Maximum inspection surface temperature	80°C (176°F)
Storage temperature	-20°C (-4°F) to 60°C (140°F)
IP rating	IP65

## Ordering Info

Part #	Short Description	Detailed Description
10061657	ZGN-SCN-ELBOWFLEX-KIT	ELBOWFLEX scanner is a manual scanner specially designed for the inspection corrosion of elbow pipe. Full Kit includes scanner, flexible probe, aqualene membrane for coupling, encoder cable, wear shoes, shims, tools & carrying case - Also includes spare components for consumables
10060712	ZGN-SCN-ELBOWFLEX	ELBOWFLEX scanner - Mechanics only
10060563	ZPA-PB1D-FLEX-7L64E64-7-WAT-3.0M-ZPAC	1D flexible linear array probe designed for linear scanning - 7 MHz - 64 elements - for use with the ELBOWFLEX scanner - active surface of 64 mm x 7 mm - ZPAC connector - 3 m cable
10060704	ZPA -ACC - AQUALENE ELBOWFLEX - KIT	Spare kit of AQUALENE membrane for ELBOWFLEX scanner
10060724	ZGN-SCN-ELBOWFLEX-ENC CBL	ELBOWFLEX - Encoder Cable compatible with ZIRCON/TOPAZ - 3m
10061656	ZGN-SCN-ELBOWFLEX-WEDGE-KIT	Dedicated wedge and wear shoes assembly for the ELBOWFLEX scanner
10061655	ZGN-SCN-ELBOWFLEX-SHIMS-KIT	Dedicated base kit of shims for the ELBOWFLEX scanner
10061654	ZPA-ACC-MANUAL GEL DISPENSING - KIT	Manual dedicated kit of coupling gel dispensing for use with the ELBOWFLEX scanner

**For more information about the ElbowFlex Scanner or other Zetec products, contact your local Zetec representative, email us at [info@zetec.com](mailto:info@zetec.com) or visit [www.zetec.com](http://www.zetec.com)**



Zetec holds ISO 9001 and ISO/IEC 17025 certifications



Zetec, Inc.  
8226 Bracken Pl. SE | Suite 100  
Snoqualmie, WA 98065

